

2.000 Digital Camera Help

If you have trouble, please email your TA. Your TA will only help you if you have followed these directions. If you have not followed directions and get into trouble, your TA will not help, you are on your own.....

STAGE 1: DOWNLOAD AND INSTALL THE DRIVERS FOR THE CAMERA!!!

Please follow the instructions for installation on the web site. **We apologize for improperly linking to the 640 cameras. The link below has now been corrected and takes you to the 640SE driver page. All other information should still be correct.**

Drivers and installation instructions for: [Windows 95/98/Me/2000/XP](#)

STAGE 2: TAKE PICTURES

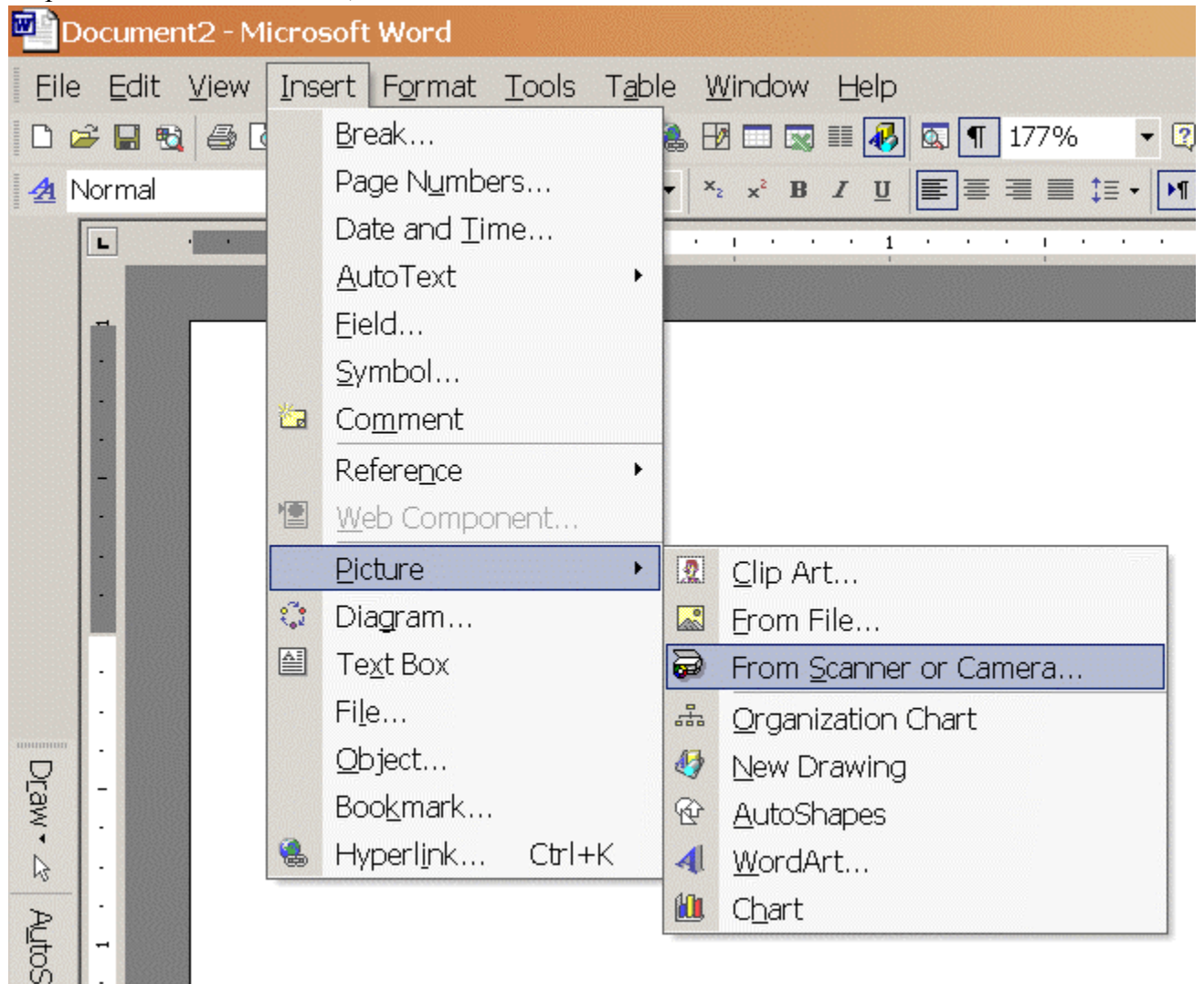
Follow the directions that came with your camera and have fun.

STAGE 3: RETRIEVE PICTURES FROM THE CAMERA

1. Make sure you restart the computer after you install the drivers.
 2. Turn the camera on.
 3. Connect the camera to your computer with the serial/USB adapter provided in the camera kit.
 4. Your computer should detect the camera. Follow any on-screen instructions. If you are asked to accept/use a driver that Microsoft has not approved, choose the option to accept/use.
 5. Decide what you want to do:
 - You can load the images into the [Microsoft Office documents](#)
 - You can load them into [Microsoft Photo Editor](#) then edit/manipulate them. See also the [2.000 Graphics Tutorial](#) for help. (Link provided on the section page)
-
-
-

Retrieving pictures from the camera using **Microsoft Powerpoint™** or **Word™**:

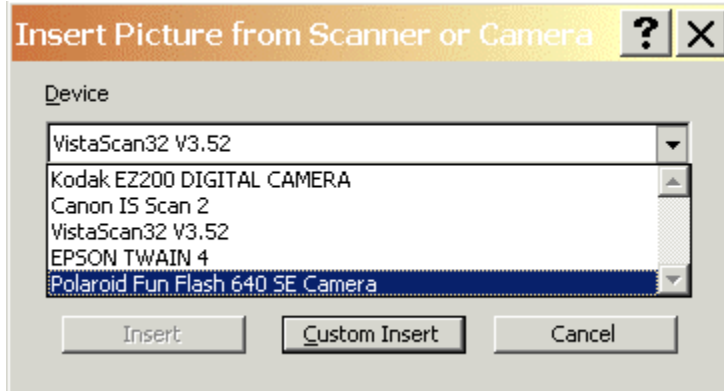
Step 1: From the insert menu, choose: Insert -> Pictures -> From Scanner or Camera



Step 2: You should see the "Insert Picture From Scanner or Camera" pop-up window

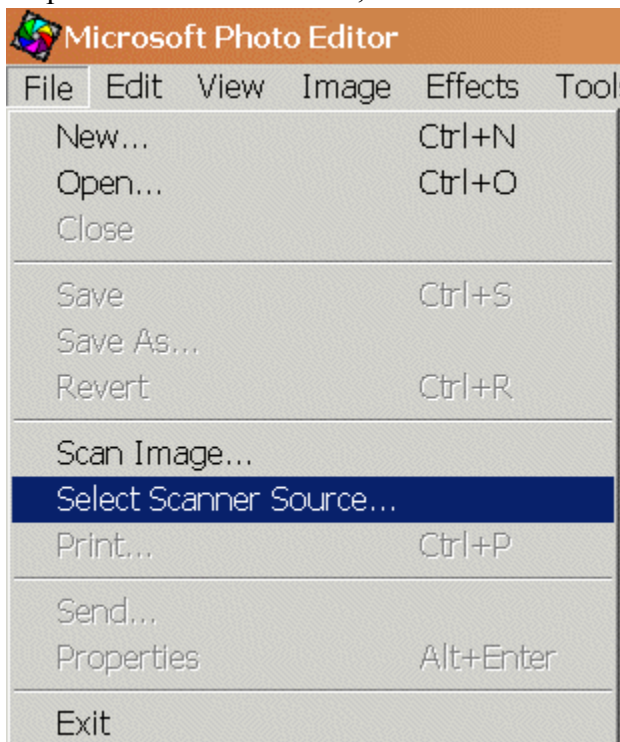
Select the Polaroid Fun Flash 640 SE Camera

Click "Custom Insert"

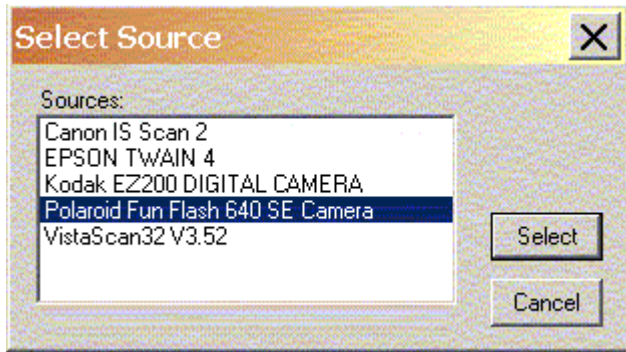


Using Microsoft PhotoEditor™ to manipulate and save images in different formats:

Step 1: From the File menu, choose: Select Scanner Source...



Step 2: From the "Select Source" pop-up window, select Polaroid Fun Flash 640 SE Camera



Step 3: From the File menu, select "Scan image..."

